



Das Hochleistungstopteil K 30 eignet sich aufgrund seiner Konstruktion für flexible Anwendungen in Vertikal- und Horizontalausrichtung. Die optimierte Anordnung und Ansteuerung der 2 x 12" / 1.4" Komponenten sorgt für ein sehr präzises Abstrahl- und Phasenverhalten. Für die Installation kann das universelle MultiRigg™ montiert werden. Das K 30 System ist mit einer passiven Weiche ausgestattet. Zur Anpassung an die Beschallungsaufgabe stehen zwei unterschiedliche Hornvarianten zur Verfügung.

## PRODUCT SPECIFICATIONS

<b>Speaker Components</b>	2 x 12" Nd (3,5" VC) / 1,4" Nd (3" VC)
<b>Description</b>	High Power HiMid System
<b>Power</b> AES / Peak	1300 W / 4000 W
<b>Impedance</b> nominal	4 Ω
<b>SPL</b> 1 W / Peak @ 1 m	101 dB / 137 dB
<b>Usable Range</b>	70 Hz - 18 kHz (-6 dB)
<b>Tuning Frequency</b> excursion minimum	80 Hz
<b>X-Overpoint</b> acoustical	750 Hz
<b>Coverage</b> horizontal / vertical	90° x 50° (60° x 50°), rotatable
<b>Connectors</b>	2 x Neutrik Speakon Coding: 1 +/- HiMid, 2 +/- thru
<b>Handles</b>	4 x
<b>Rigging / Fittings</b>	10 x M10 for MultiRigg™ 35 mm Pole Mount
<b>Weight</b>	32 kg
<b>Size</b> height x width x depth	77,0 x 36,0 x 46,0 cm
<b>Order No.</b>	<b>01030/90°</b> (90° x 50° Version) <b>01030/60°</b> (60° x 50° Version)

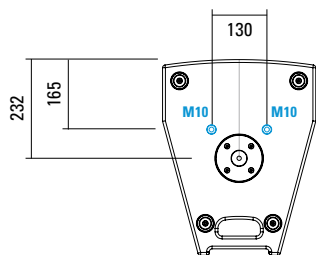


60° Version

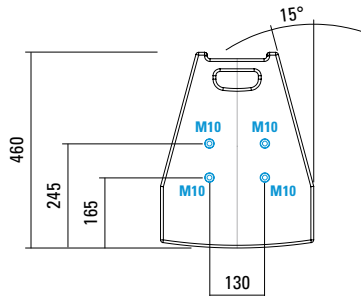
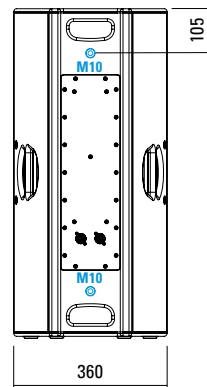
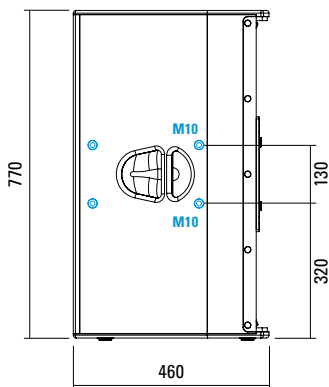
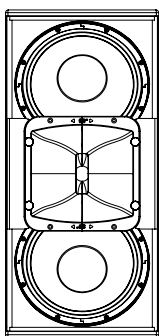
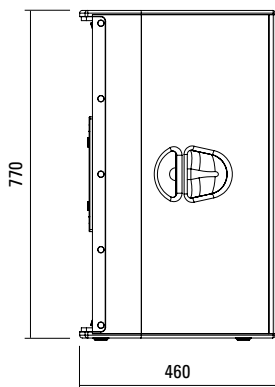


M10 Twinpoints für die einfache Installation mit dem universellen MultiRigg™.

# DIMENSIONS



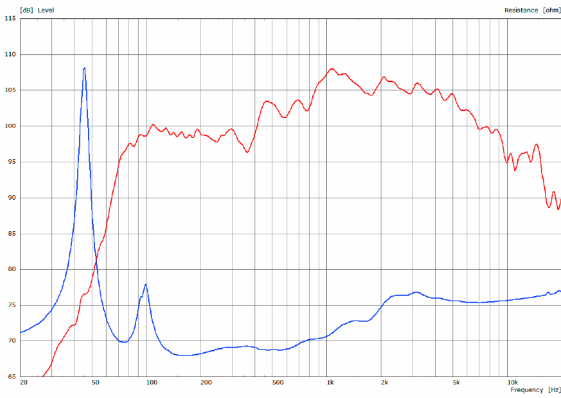
5 x M10 Twinpoints for MultiRigg™



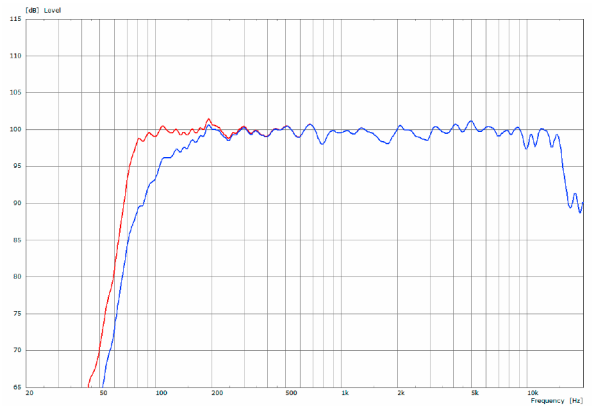
Controller Setups:

 <https://www.seeburg.com/de/downloads>

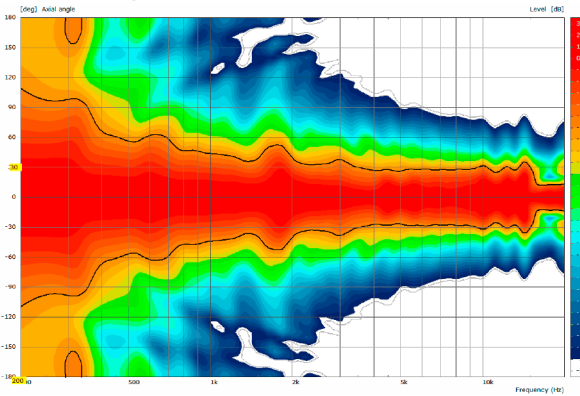
K 30 xov - Sensitivity 1 W @ 1 m + Impedance



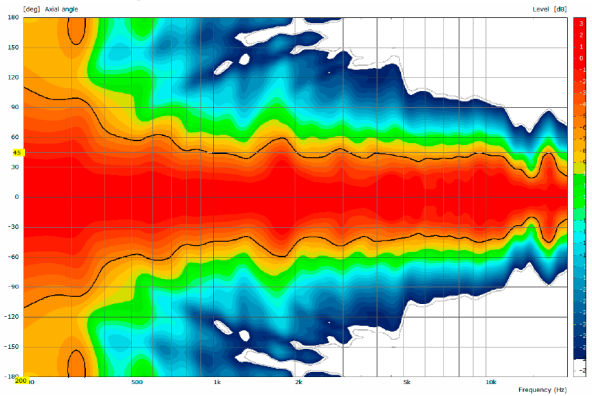
K 30 xov - Frequency Response with DSP Presets



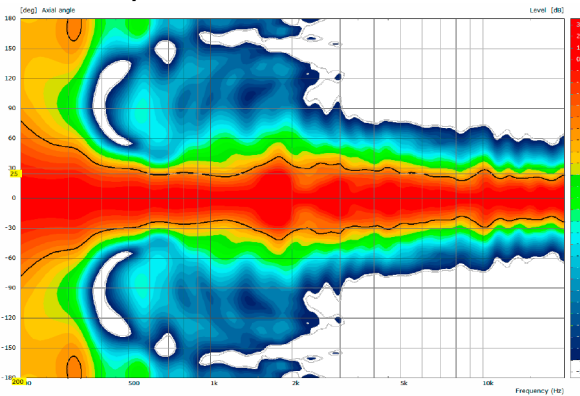
2D Directivity Plot - horizontal - 60° x 50°



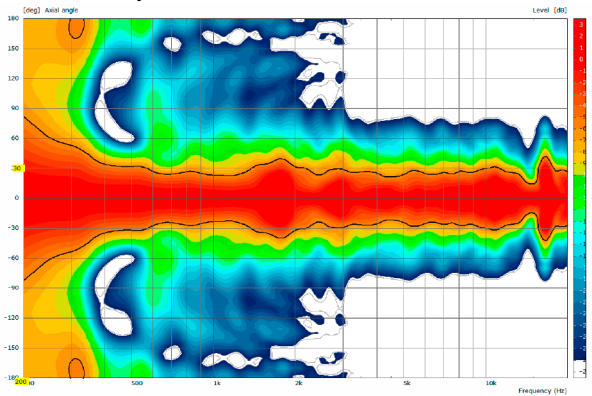
2D Directivity Plot - horizontal - 90° x 50°



2D Directivity Plot - vertikal - 60° x 50°



2D Directivity Plot - vertikal- 90° x 50°





**Flying Cradle**

to fly one or two K 30 units,  
for horizontal or vertical alignment,  
(incl. load adapter M10, 4 x knurled  
screws M10 x 20 mm)  
Order No. **01353**



**Connection Kit**

to connect two K 30 units,  
(6 x knurled screws M10 x 20 mm)  
Order No. **08157/K30**



**Knurled Screw**

M10 x 20 mm  
Order No. **73750/w** (RAL 9010)  
Order No. **73750**



**Knurled Head Nut**

reduction screw for fastening  
M10 Pole Mount Adapter (08126)  
Order No. **73755**



**Quick Trigger Clamp**

max. load 100 kg  
Order No. **01223/100 kg**



**Steel Safety**

8 mm x 600 mm,  
max. load 40 kg (BGI 810-3),  
quick connector undetachably  
Order No. **01376/8**



**Ring Screw**

M10– DIN 580  
Order No. **73700** (zincd)  
Order No. **73700/sw** (black zincd)



**TV Spigot**

M10 internal thread,  
28 mm Ø  
Order No. **08128**



**Pole Mount Adapter**

35 mm ø → M10 x 16 mm,  
M8 x 20 star knob screw  
Order No. **08126**  
Order No. **08126/w** (RAL 9010)



**Pole Mount Adapter**

35 mm ø → M10 x 16 mm  
Order No. **08126/II**  
Order No. **08126/II/w** (RAL 9010)

## ACCESSORIES K 30

### MultiRigg™



for flown and ground stacked applications, (incl. 2 x knurled screws M10 x 20 mm, 1 x handle screw M8 x 55 mm), max. load 50 kg  
Order No. **01360**

### MultiRigg™ Light



for fixed installations, (incl. 2 x socket head screws M10 x 20 mm), max. load 50 kg  
Order No. **01362**

### MultiRigg™ Basic



(incl. load adapter M10, 2 x knurled screws M10 x 20 mm), max. load: 50 kg  
Order No. **01364**

### MultiTilt™



Tilt adapter with adjustable tilt from 0° to 37,5° (2,5° steps), integr. pole mount adapter with clamping device, (incl. 2 x knurled screws M10 x 20 mm), max. load 50 kg  
Order No. **01370**

### MultiTilt™ Heavy Duty



for Galeo C / C-Series / K 24 / K 30 to be used with FD34 / FD33 truss, minimum truss length: 0,21 m consisting of base plate with M20 and tilt adjuster (incl. socket head screw M20 x 30 mm), weight: 13,5 kg, max. load 150 kg  
Order No. **01359** (without traverse)

### Wall Mount



bar: 269 mm, (incl. socket head screw M10 x 70 mm, hex lock nut and flat washer M10), max. load 40 kg  
Order No. **08130/F/269/w** (RAL 9010)  
Order No. **08130/F/269**

### Wall Mount



bar: 400 mm, (incl. socket head screw M10 x 70, hex lock nut and flat washer M10), max. load 40 kg  
Order No. **08130/F400/w** (RAL 9010)  
Order No. **08130/F400**

### Bag



for 1 x K 30, with two-way zip, padded, incl. label pocket  
Order No. **01234/K30**

### Flight Case



for 2 pcs. K 30, mounting option for MultiRigg / MultiTilt in the lid, partition wall, interior lined with felt, PVC coated black, 4 x stacking recesses, 4 x 100 mm blue wheels (2 pcs. with brake)  
Size: 80 x 84 x 66 cm (W x D x H), 37 kg  
Order No. **16032**



M10 Twinpoints für die einfache Installation mit MultiRiggs /MultiTilts.

