



The F series speakers are suitable for all applications where highly precise and broadband sound transmission down to low frequencies is required. This makes perfect integration easy and opens up many application possibilities in the field of corporate events, trade fairs and product presentations, press conferences, in conference rooms and lecture halls, in theaters, concert halls and cinemas as well as in sports halls and fitness centers. If the speakers are supported by subwoofers, concert levels are also possible. The arrangement of the components ensures good focusing to optimize speech intelligibility. All models feature newly developed top-class components to achieve the best possible sound quality and defined dispersion characteristics.

PRODUCT SPECIFICATIONS

Speaker Components	2 x 10" Nd (3" VC) / 1,4" Nd (3" VC)
Description	Fullrange Speaker System
Power AES / Peak	800 W / 2400 W
Impedance nominal	4 Ω
SPL 1 W / Peak @ 1 m	97,5 dB / 131 dB
Usable Range	55 Hz - 18 kHz (-6 dB)
Tuning Frequency Excursion minimum	60 Hz
X - Overpoint acoustical	1,0 kHz
Coverage horizontal / vertical	90° x 60°, rotatable
Enclosure Wedge Angle	20°
Connectors	2 x NLT4MP in/out (optionally NLT4FP) Coding: 1 +/- FR, 2 +/- loop thru
Handles	2 x
Rigging / Fittings	8 x M10 35 mm pole mount
Weight	25,5 kg
Size height x width x depth	70,0 x 30,0 x 43,0 cm
Order No.	00325



The tweeter horns can be rotated by 90° as required.

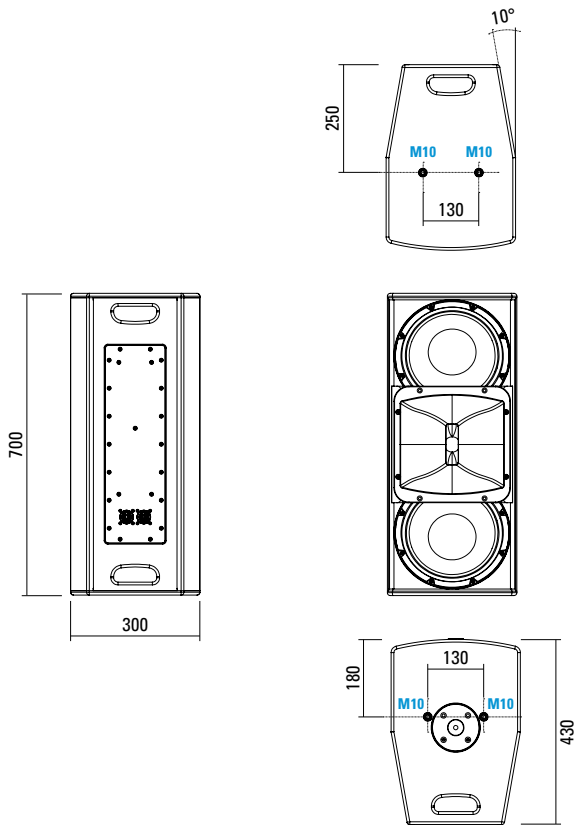


The front grille is held in place by magnets and is easy to remove.

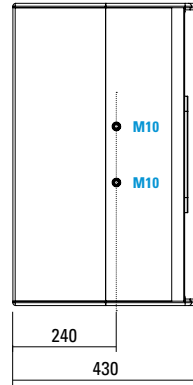


Versatile M10 mounting points for attaching the various accessories.

DIMENSIONS

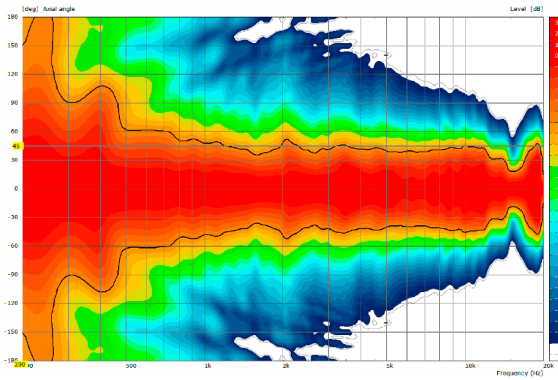


8 x M10 Twinpoints for MultiRigg™

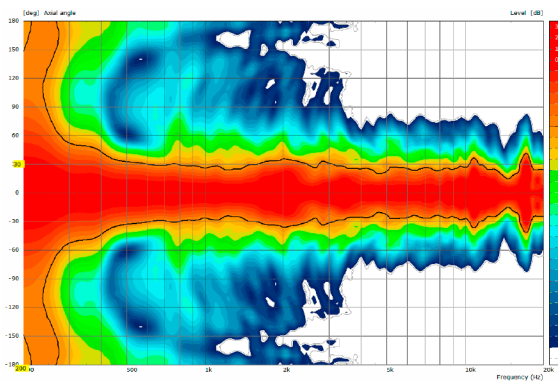


MEASUREMENTS

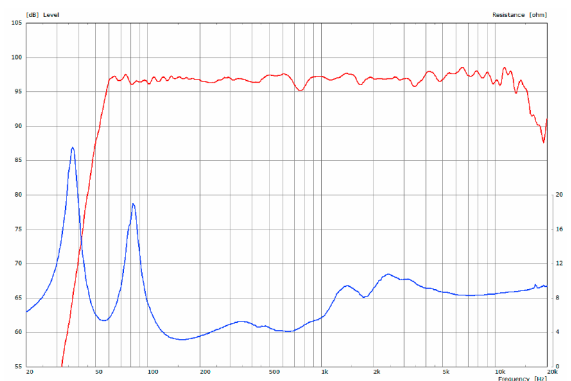
2D Directivity Plot - horizontal



2D Directivity Plot - vertical



Frequency Response with Preset + Impedance



Flying-Bracket

for F 4, horizontal alignment,
(incl. 4 x socket head screws
M10 x 20 mm, 4 x washers M10,
4 x rubber washers)
Order No. **01207/F4**

Handle Screw



for flying brackets, adjustable
M10 x 20 mm
Order No. **08375/20**

MultiRigg™



for flown and ground stacked
applications, (incl. 2 x knurled screws
M10 x 20 mm, 1 x handle screw
M8 x 55 mm), max. load 50 kg
Order No. **01360**

MultiRigg™ light



for fixed installations,
(incl. 2 x socket head screws M10 x
20 mm), max. load 50 kg
Order No. **01362**

MultiRigg™ Basic

(incl. load adapter M10,
2 x knurled screws M10 x 20 mm),
max. load: 50 kg
Order No. **01364**

MultiTilt™



Tilt adapter with adjustable tilt from
0° to 37,5° (2,5° steps),
integr. pole mount adapter with clam-
ping device, (incl. 2 x knurled screws
M10 x 20 mm), max. load 50 kg
Order No. **01370**

Knurled Screw



M10 x 20 mm
Order No. **73750/w** (RAL 9010)
Order No. **73750**

Pole Mount Adapter



35 mm ø → M10 x 16 mm,
M8 x 20 star knob screw
Order No. **08126**

35 mm ø → M10 x 16 mm
Order No. **08126/II**

Knurled Head Nut



reduction screw for fastening
M10 Pole Mount Adapter (08126)
Order No. **73755**

Quick Trigger Clamp



max. load 100 kg
Order No. **01223/100 kg**

Steel Safety



8 mm x 600 mm,
quick connector undetachably,
max. load 40 kg (BGI 810-3)
Order No. **01376/8**

Ring Screw



M10– DIN 580
Order No. **73700** (zincd)
Order No. **73700/sw** (black zincd)

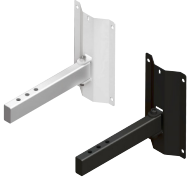
TV Spigot



10 mm internal thread,
28 mm Ø
Order No. **08128**

ACCESSORIES F 4

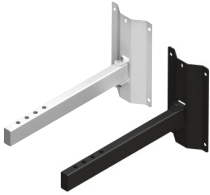
Wall Mount



bar: 269 mm,
(incl. socket head screw M10 x 70 mm,
hex lock nut and flat washer M10),
max. load 40 kg

Order No. **08130/F/269/w** (RAL 9010)
Order No. **08130/F/269**

Wall Mount



bar: 400 mm,
(incl. socket head screw M10 x 70 mm,
hex lock nut and flat washer M10),
max. load 40 kg

Order No. **08130/F400/w** (RAL 9010)
Order No. **08130/F400**