

# Two-Way Line Array **Galeo C**



A compact and versatile high performance Line Array featuring various innovative acoustical and mechanical solutions. This 2 x 8" / 1.4" system is driven two-way active. The Galeo C is a visually unobtrusive sound reinforcement system equally suited to high end permanent installations and demanding tour applications. A choice of horizontal coverage angles of 70° or 100° is provided by the interchangeable AMR horn elements. The maximum splay angle of 14° allows a high degree of curvature in the line array with a small number of cabinets. The innovative integrated flying hardware allows the curving angle to be set after the system has been lifted up, thereby simplifying the set-up process.

## PRODUCT SPECIFICATIONS

<b>Speaker Components</b>	2 x 8" Nd (2,5" VC) / 1,4" Nd (3" VC)
<b>Description</b>	Two-Way Line Array Unit
<b>Power</b> AES / Peak	LF: 600 W / 1800 W HF: 110 W / 330 W
<b>Impedance</b> nominal	LF: 16 Ω / HF: 16 Ω
<b>SPL</b> 1 W / Peak @ 1m	LF: 98 dB / 131 dB HF: 111 dB / 136 dB
<b>Usable Range</b>	80 Hz - 20 kHz (- 6 dB)
<b>Tuning Frequency</b> excursion minimum	85 Hz
<b>X-Overpoint</b> acoustical	Depends on preset
<b>Coverage</b> horizontal x vertical	100° x 14° (100°-version) 70° x 14° (70°-version)
<b>Max. Splay Angle</b>	14°
<b>Connectors</b>	2 x Speakon NL4 in/out Coding: 1 +/- HF, 2 +/- LF
<b>Handles</b>	4 x
<b>Rigging / Fittings</b>	6 x M10 Integrated flying hardware
<b>Weight</b>	22 kg
<b>Size</b> height x width x depth	24,0 x 58,0 x 46,0 cm
<b>Order No.</b>	<b>00410/100</b> (100° - Version) <b>00410/70</b> (70° - Version)

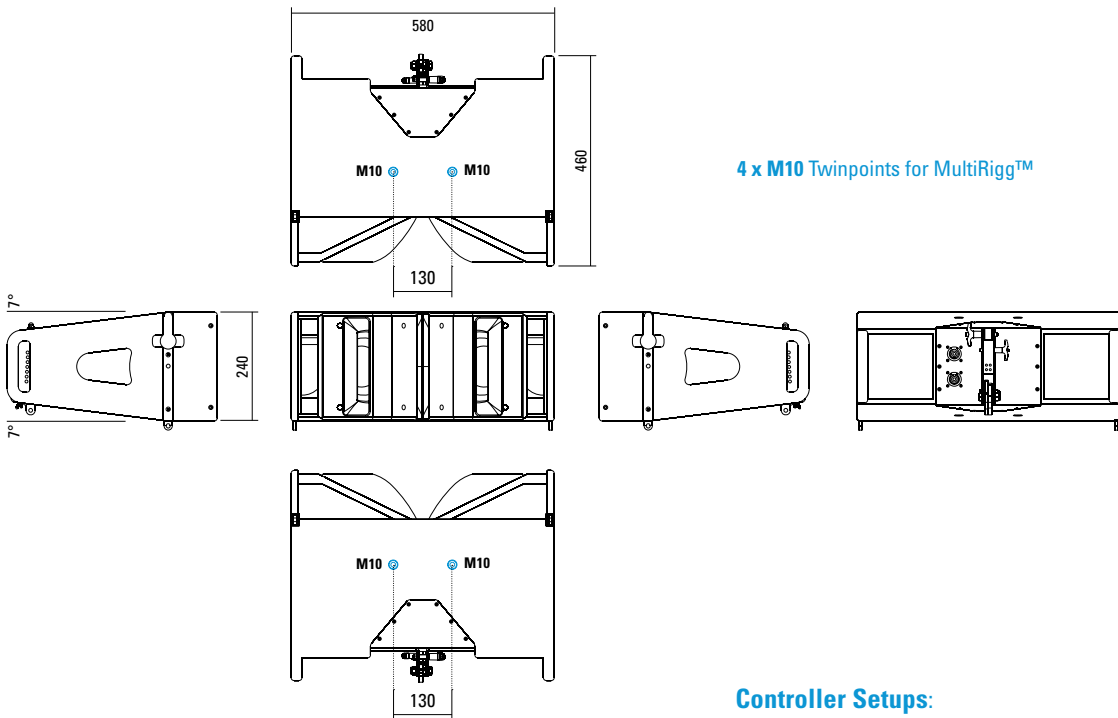


100° Version.



MultiRigg™ Hardware.

## DIMENSIONS



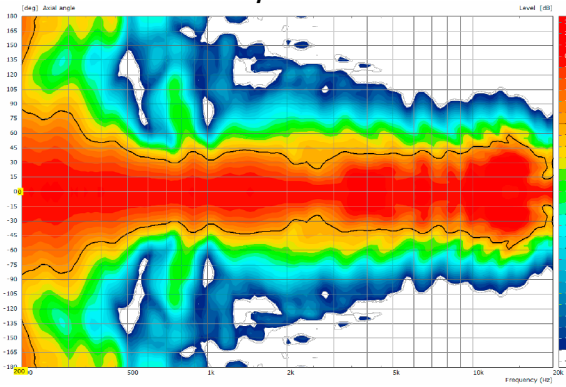
4 x M10 Twinpoints for MultiRigg™

Controller Setups:

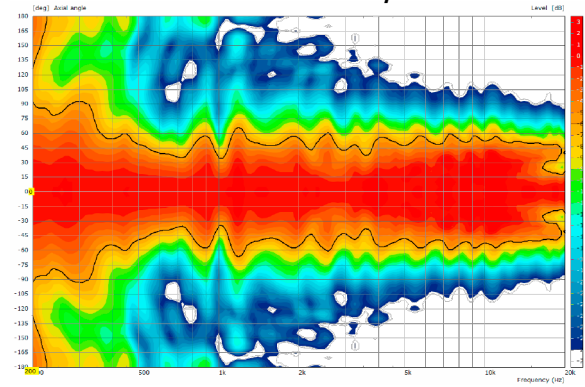
<https://www.seeburg.com/en/downloads>

## MEASUREMENTS

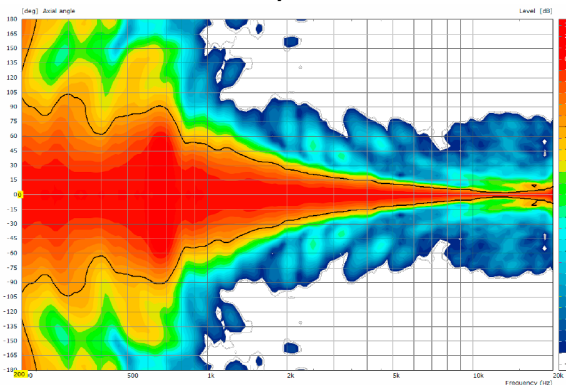
Galeo C 70° - 2D Directivity Plot - horizontal



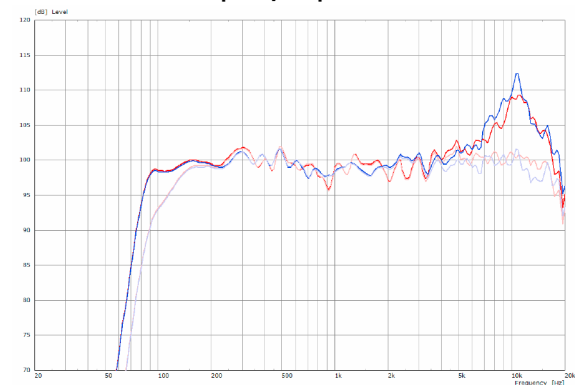
Galeo C 100° - horizontal - 2D Directivity Plot



Galeo C 70° / 100° - Directivity Plot - vertical



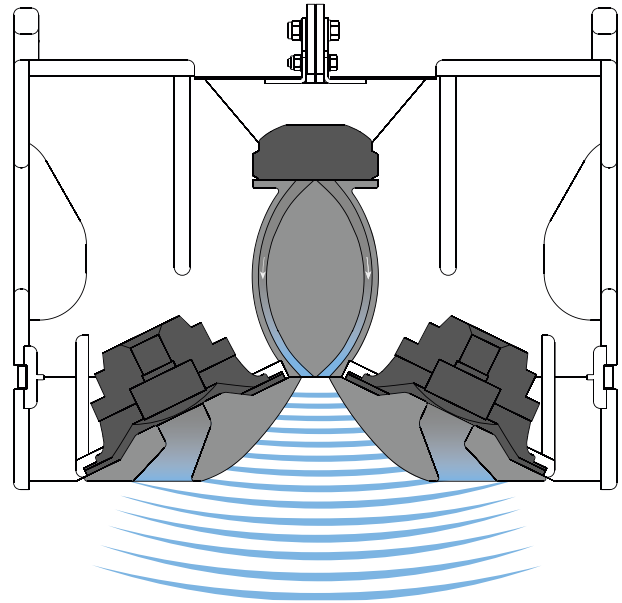
Galeo 70° / 100° - Frequency Response with Presets



**AMR® PRINCIPLE**

The AMR horn panels contain integrated channels which allow the sound waves generated by the low-mid speakers mounted behind the horn to pass through. For sound waves in the frequency range generated by the 1.4" HF driver, these channels behave as if they were sealed, due to the air mass inside the channels acting as a reflector (AMR = Air Mass Reflection).

The low-mid speakers are coupled to an acoustical band pass filter with a center frequency close to the crossover frequency between the Mid and HF drivers. This construction provides smooth horizontal dispersion over a wide frequency range. Another asset is the extreme compactness of this design.



**Vertical Characteristic / Cylindrical wave front**

The acoustic coupling between multiple Galeo C units produces a cylindrical wave front. The bundling of the acoustical energy means, that the system has a longer throw. The vertical coverage angle is determined by the number of Galeo C units, and their angle relative to one another. The longer the array, the longer the throw.

**AMR® REFLECTORS**



**By exchanging the AMR Reflectors, the horizontal dispersion can be changed from 70° to 100° and back according to demand.**

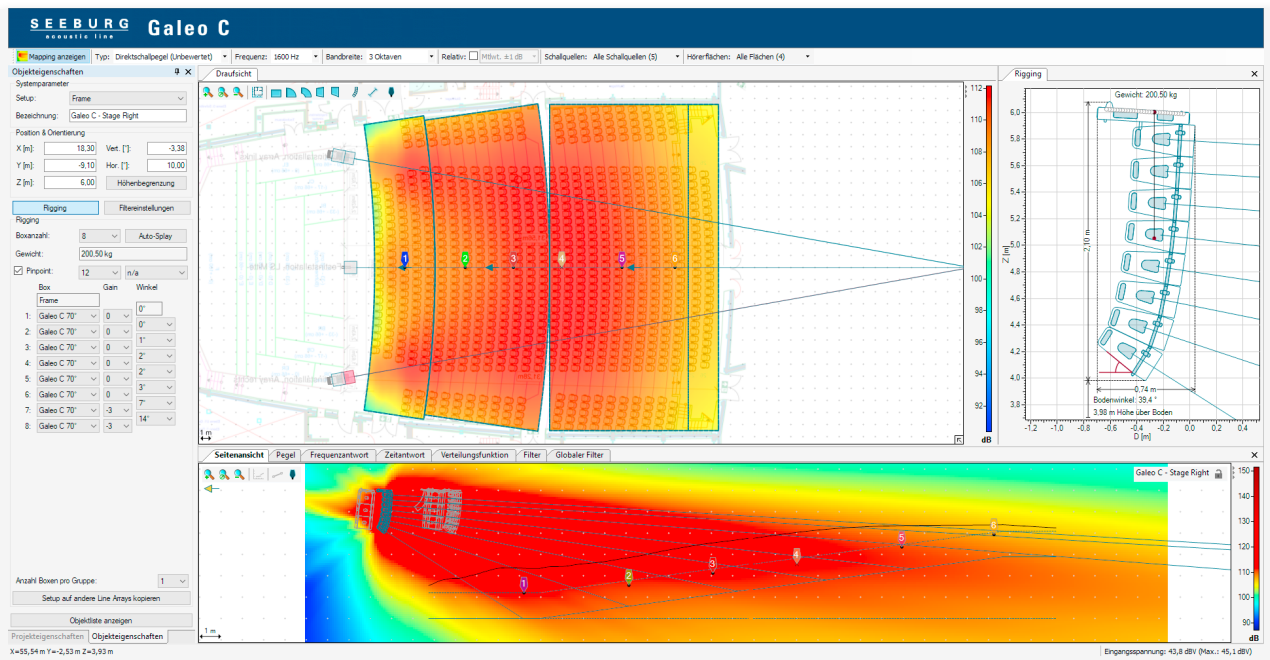
The more tightly bundled 70°- versions of the Galeo C system was developed especially for narrower audience areas. Thanks to the patented Air Mass Reflection principle, it is characterised by extremely precise and even directivity.

The simulation program.

The EASE-FOCUS 3 software is available for use in the calculation of splay angles and expected coverage characteristics. The program has been especially adapted for the Galeo system. The completed simulation can be exported in printable form as a pdf file to assist the technician in the installation of the system.

Software EASE-FOCUS 3:

<https://www.seeburg.com/en/downloads>



**Objekteigenschaften**

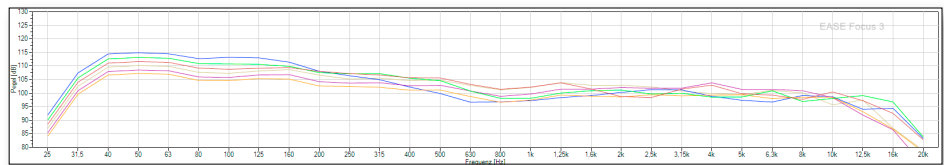
Systemparameter  
 Setup: Frame

Bezeichnung: Galeo C - Stage Right

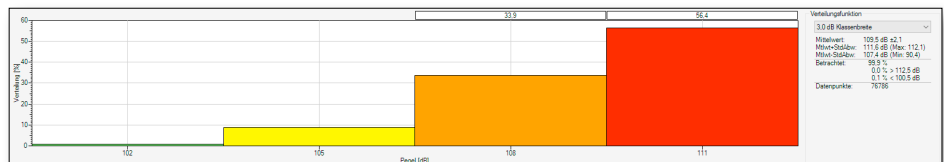
Position & Orientierung  
 X [m]: 18.30 Vert. [°]: -3.38  
 Y [m]: -9.10 Hor. [°]: 10.00  
 Z [m]: 6.00 Höhenbegrenzung

Rigging  
 Boxanzahl: 8 Auto-Splay  
 Gewicht: 200.50 kg  
 Pinpoint: 12 n/a

Box	Gain	Winkel
1: Galeo C 70°	0	0°
2: Galeo C 70°	0	0°
3: Galeo C 70°	0	1°
4: Galeo C 70°	0	2°
5: Galeo C 70°	0	3°
6: Galeo C 70°	0	7°
7: Galeo C 70°	-3	14°
8: Galeo C 70°	-3	



Simulation Frequency Response



Simulation Distribution

## FLYING SYSTEM



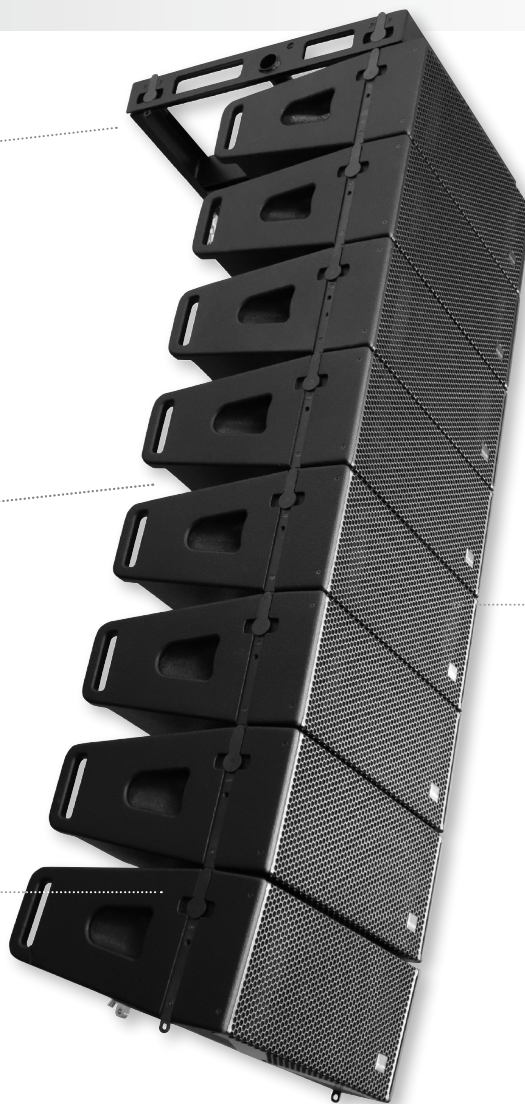
Flying Frame



Auto-locking flying fixtures.



Integrated and recessed flying hardware.



Opaque front grille.

## GROUND STACKED SOLUTIONS



**Flying Frame**  
3 x Galeo C / 2 x Galeo C Sub



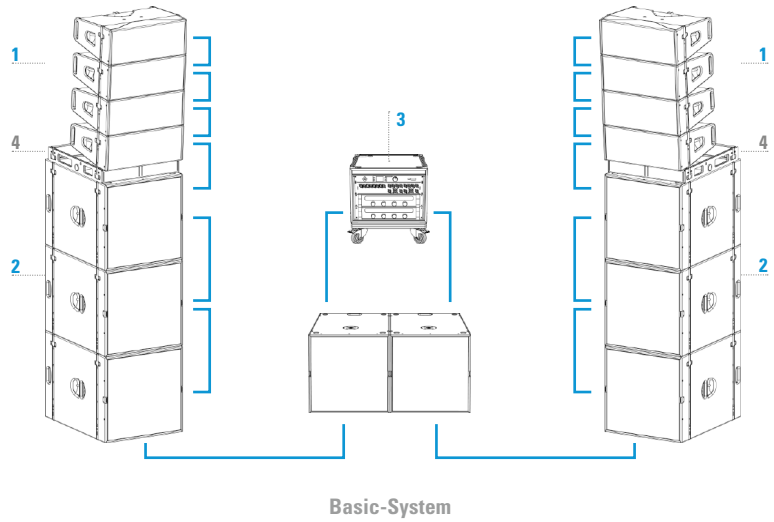
**MultiRigg™**  
2 x Galeo C / Galeo C Sub



**Stacking Board**  
3 x Galeo C / 2 x Galeo C Sub



## CONFIGURATION EXAMPLES

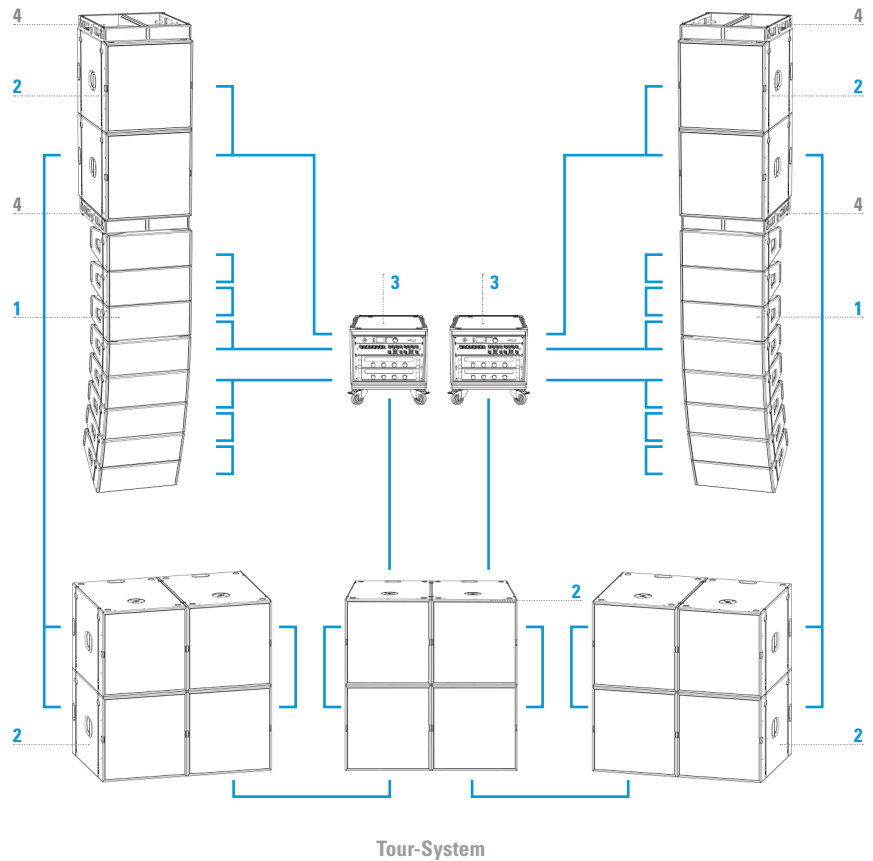


### Basic-System

Components	Order No.
1 8 x Galeo C	00410/100
2 8 x Galeo C Sub	00415
3 19" x 7 Rack	10010
HDLM 8	01402
Connection Panel CP 4.8	01410
2 x 4-Channel Amping (4 x in / 8 x out)	
Accessories	Order No.
4 2 x Flying Frame	01310

### Tour-System

Components	Order No.
1 16 x Galeo C	00410/70
2 16 x Galeo C Sub	00415
3 2 x 19" x 7 Rack	10010
HDLM 8	01402
Connection Panel CP 4.8	01410
2 x 4-Channel Amping (4 x in / 8 x out)	
Accessories	Order No.
4 4 x Flying Frame	01310



**Flying Frame**



for Galeo C / Galeo C Sub,  
incl. accessories  
(3 pcs. 8 x 25 mm ball lock pins,  
load adapter and 100 mm distance  
bar) - also for ground stack  
Order No. **01326**

**Stacking Board**



fits: Galeo C Sub,  
up to 6 x groundstacked Galeo C units,  
incl. accessories (3 x ball lock pins  
8 x 25, 1 x screw M20 x 80,  
1 x screw M20 x 35), 3,2 kg  
Order No. **01396/C**

**MultiRigg™**



swiveling fastening solution  
for horizontal and vertical alignment,  
for flown / ground stacked / mounted  
applications, incl. accessories  
(2 x knurled screws M10 x 20 mm,  
1 x handle screw M8 x 55 mm),  
max. load 50 kg  
Order No. **01360**

**MultiRigg™ light**



version for fixed installations,  
for horizontal and vertical alignment,  
tiltable vertical angle,  
incl. accessories (2 x M10 x 20 socket  
head screws), max. load 50 kg  
Order No. **01362**

**MultiTilt™**



Tilt adapter with adjustable tilt from  
0° to 37,5° (2,5° steps), integr. pole  
mount adapter with clamping device,  
2 x knurled screws (M10 x 20 mm),  
max. load 50 kg  
Order No. **01370**

**Pull Adapter - Bottom**



for Galeo C top unit  
Order No. **01329/B**

**Pull Adapter - Top**



for Galeo C flying frame  
Order No. **01329/T**

**Load Adapter**



for Galeo C / Galeo C Sub  
flying frame  
Order No. **01327**

**Clamp Adapter**



for Galeo C / Galeo C Sub  
flying frame  
Order No. **01328**

**Ball Lock Pins**



for Galeo C / Galeo C Sub  
flying frame  
Order No. **01380/6x25** (6 x 25 mm)  
Order No. **01380/8x25** (8 x 25 mm)

**Knurled Screw**



M10 x 20 mm  
Order No. **73750**  
Order No. **73750/w** (RAL 9010)

**Patch Cable**



for Galeo C  
Order No. **08448**



Stacking Board



Load Adapter

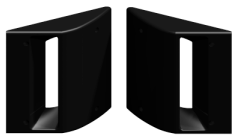
## ACCESSORIES Galeo C

### AMR Reflectors 100°



for Galeo C,  
consisting of 2 pcs.  
AMR reflectors 100°,  
incl. fittings  
Order No. **08139/100**

### AMR Reflectors 70°



for Galeo C,  
consisting of 2 pcs.  
AMR reflectors 70°,  
incl. fittings  
Order No. **08139/70**

### Cover



for 2 x 4 Galeo C top units,  
with zippers for one-man handling,  
4 x holes for fixing flying frame  
Order No. **01234/2x4**

### Rain Cover

for 4 x Galeo C top units  
Order No. **01238/C/outdoor**

### Utility-Box

for Galeo C-Dolly,  
fits for 2 pcs. flying frames  
and accessories  
Order No. **01262/UB**

### Dolly



for Galeo C, up to 12 stacked units,  
stackable  
Size (W x D): 100 x 60 cm  
Order No. **01262**

### Flight Case



for 4 pcs. Galeo C units, heavy duty,  
10 x recessed sprung handles,  
4 x scanner windows, 4 x 100 mm  
blue wheels with brake, interior lined  
with felt  
Size (H x W x D): 79 x 104 x 56 cm  
Order No. **16002/C**

### Flight Case



for 2 pcs. Galeo C flying frames,  
central shelf for accessories (16 cm),  
6 x recessed sprung handles, 4 x 100  
mm blue wheels, 2 pcs. with brake,  
interior lined with felt  
Size (H x W x D): 77 x 75 x 48 cm  
Order No. **16003/C**

