



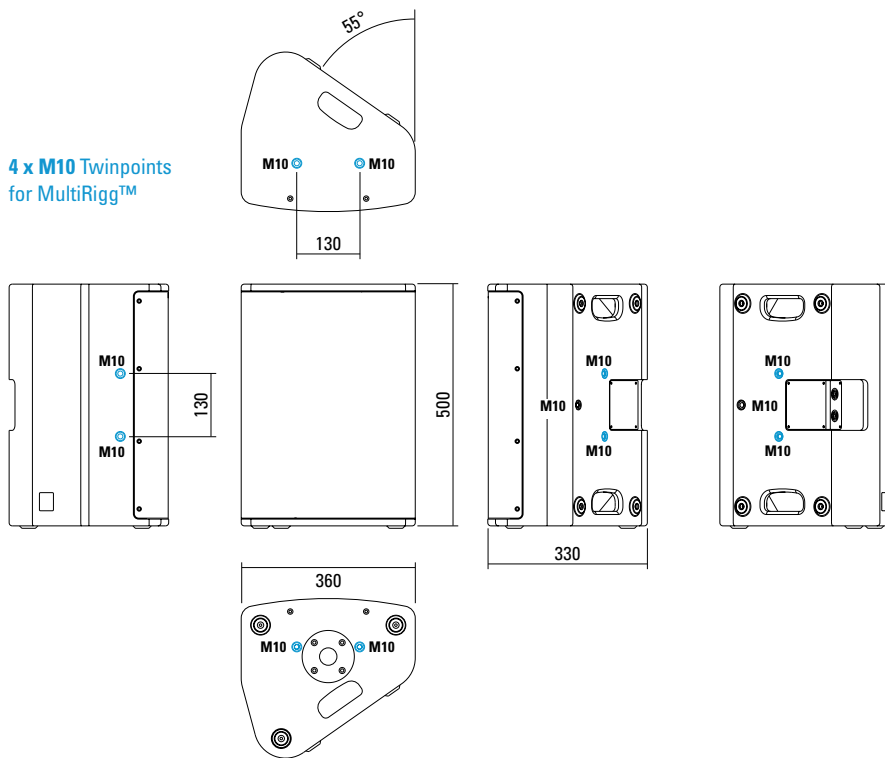
**Multifunctional premium-class compact 2-way system. The coaxial configuration in combination with a carefully designed large-area horn ensures absolutely constant response even off the main axis. High-power Neodym drivers and long-excursion coils provide high efficiency and reduced distortion. Nine M10 threaded mounting points are available to mount MultiRigg hardware and other accessories for installation or mobile applications. The integrated digital amplifier technology provides 1500 / 400 W AES and DSP control. A range of factory-configured presets and volume settings can be selected.**

## PRODUCT SPECIFICATIONS

<b>Speaker Components</b>	12" Nd (3,5" VC) / 1,4" Nd (3" VC)
<b>Description</b>	Multifunctional Coaxial Sound System
<b>Amp Power</b> AES	LF: 1500 W / HF: 400 W / 110-230 V
<b>Rated Current</b>	0,7 A
<b>SPL</b> Peak @ 1 m	131 dB
<b>Max. Input Signal</b>	25 dBu
<b>DSP</b>	DPLMx FPGA Processing 32 bit floating point
<b>AD / DA</b>	24 bit / 96 kHz
<b>Latency</b>	0,8 ms (analog in to analog out)
<b>Usable Range</b>	55 Hz - 18 kHz (-6 dB)
<b>Tuning Frequency</b> excursion minimum	65 Hz
<b>X - Overpoint</b> acoustical	Depends on preset
<b>Coverage</b> horizontal / vertical	80° x 60° - rotatable
<b>Connectors</b>	XLR in, Ethercon, Powercon in
<b>Handles</b>	2 x
<b>Rigging / Fittings</b>	9 x M10 to be used with MultiRigg™ 35 mm pole mount
<b>Weight</b>	18,5 kg
<b>Size</b> height x width x depth	50,0 x 36,0 x 33,0 cm
<b>Order No.</b>	<b>01095/dp</b>

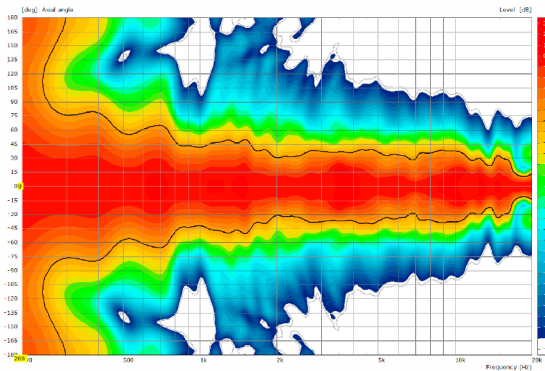


## DIMENSIONS

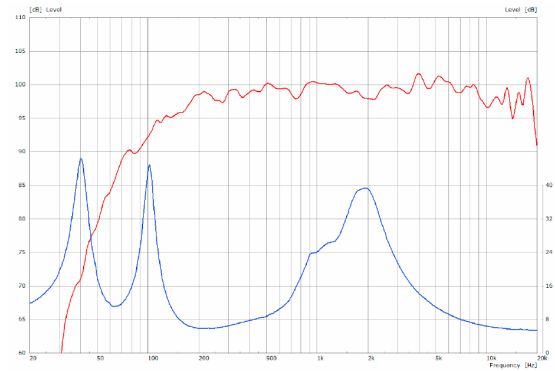


## MEASUREMENTS

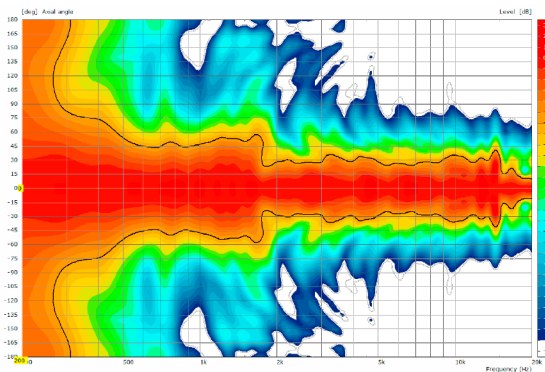
2D Directivity Plot - horizontal



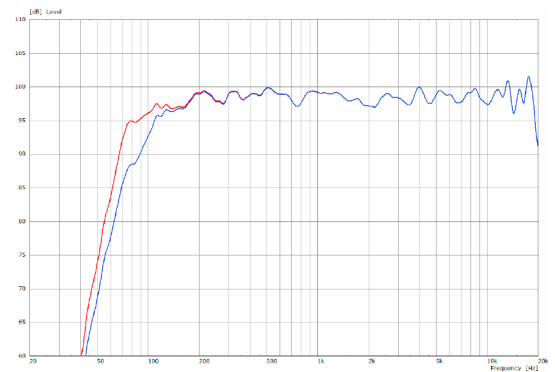
Sensitivity 1 W @ 1 m + Impedance



2D Directivity Plot - vertical



Frequency Response with Presets



The X 6 dp features integrated digital amplifier electronics with a DSP controller (dp = digitally powered). Various factory-configured presets and volume settings can be called up directly on the box or via a network connection.

High-grade electronic components from the industrial sector and a first-class circuit design ensure excellent audio quality with low distortion and a minimal noise floor. Highly efficient and “intelligent” limiter systems ensure optimum protection against overload, without restricting the possibilities offered by this high-performance sound system.

 [Presets > Click Start Manual](#)

**Level**

Adjustment in 3 dB steps (-12 dB to +6 dB).

**Status**

**Mute LED**

Red light when the system is muted or under technically critical conditions.

**Limit LED**

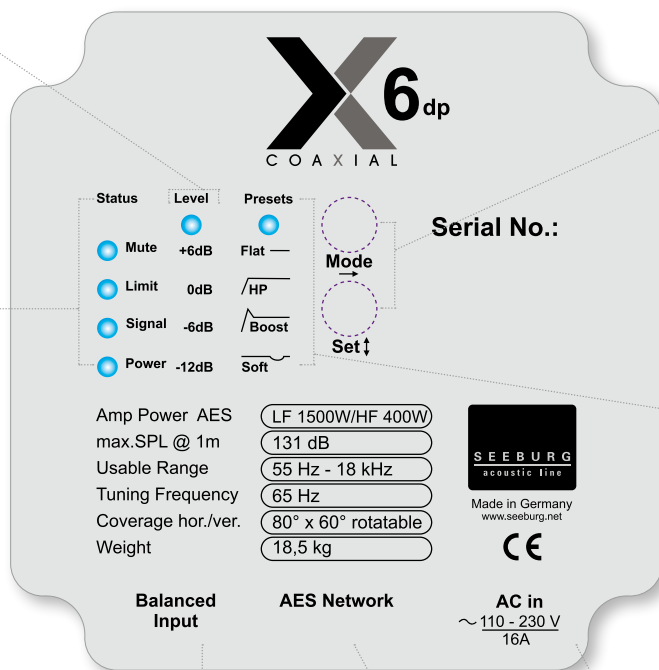
Yellow light when the limiter is restricting the level.

**Signal LED**

Green light when the input signal exceeds -20 dBu

**Power LED**

Green light when the system is switched on.



**Mode - key**

Switches between control modes: Status, Level and Presets.

**Set - key**

Setting of various values and Mute on / off.

**Presets**

**Flat**

This setting provides a linear frequency response with a neutral sound characteristics. Standard setting for many applications.

**HP**

Switches in a high pass filter for use in combination with a subwoofer.

**Boost**

The same neutral response as the „Flat“ setting, but with the addition of a bass boost.

**Soft**

Reduces the level in the frequency range from 2.5 - 5 kHz, to which the ear is particularly sensitive. This setting is recommended for high level reproduction of highly compressed music tracks.

**XLR**

- Symmetrical analog input.
- Effective filter protection against HF interference and DC Voltages.
- Electronically balanced to prevent noise.

**Ethercon**

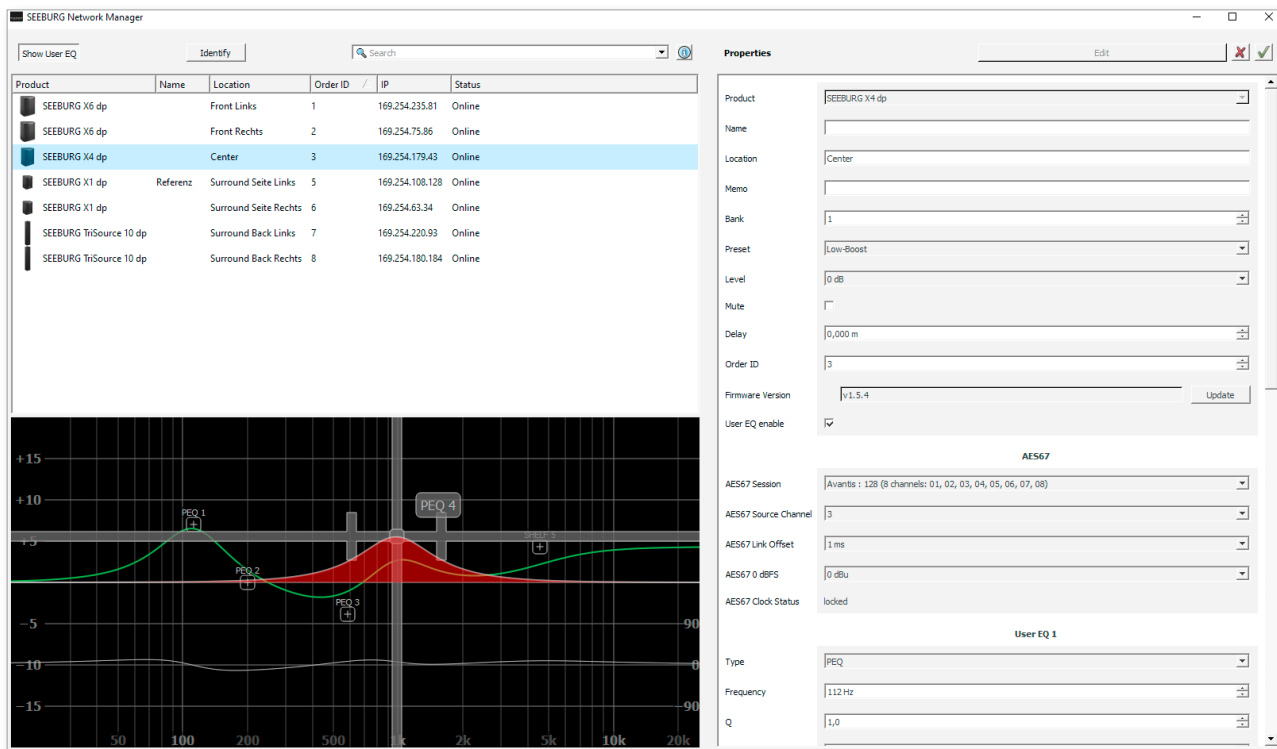
Interface for remote control and audio transfer via ethernet (AES 67).

**Powercon (blue)**

Power supply ~ 110-230 V / 16 A max.

# SEEBURG NETWORK Manager

With the Software SEEBURG Network Manager all selfpowered systems can be controlled via network.



## Features:

- > **Remote control** of functions such as recalling presets and banks, level control and mute, and locking the controls on the loudspeakers.
- > **Visual display** of all systems connected to the control network.
- > Storable names and location labels with a **global search function**.
- > **Selection of loudspeakers** in the list for simultaneous set-up and control changes.
- > **Fully parametric user EQs and delay settings** for time alignment, with a graphical user interface
- > **Time Delay** with up to **2.8 seconds runtime**.
- > **Audio-over-Ethernet (AoE)** via **AES 67**.
- > Connection with **media control systems** via **API**.
- > Basic **network settings**.
- > **Documentation** is available **online**.
- > **Identification function** by way of flashing LEDs on the dp loudspeaker systems.
- > **Firmware updates** can be applied.



 [SEEBURG Network Manager > Quick Start Manual \(pdf\)](#)

## AES NETWORK interface

All selfpowered systems are equipped as standard with an **AES Network interface**.

This is used for **remote control** via the **SEEBURG Network Manager** and for **Audio-over-Ethernet (AoE) audio transmission** via **AES 67**.



AES Network

**MultiRigg™**



swiveling fastening solution for horizontal and vertical alignment, for flown / ground stacked / mounted applications, incl. accessories (2 x knurled screws M10 x 20 mm, 1 x handle screw M8 x 55 mm), max. load 50 kg  
Order No. **01360**

**MultiRigg™ light**



version for fixed installations, for horizontal and vertical alignment, tiltable vertical angle, incl. accessories (2 x M10 x 20 socket head screws), max. load 50 kg  
Order No. **01362**

**MultiTilt™**



Tilt adapter with adjustable tilt from 0° to 37,5° (2,5° steps), integr. pole mount adapter with clamping device, 2 x knurled screws (M10 x 20 mm), max. load 50 kg  
Order No. **01370**

**Knurled Screw**



M10 x 20 mm  
Order No. **73750/w** (RAL 9010)  
Order No. **73750**

**Knurled Head Nut**



reduction screw for fastening M10 Pole Mount Adapter (08126)  
Order No. **73755**

**Pole Mount Adapter**



35 mm ø → M10 x 16 mm, M8 x 20 star knob screw  
Order No. **08126**  
35 mm ø → M10 x 16 mm  
Order No. **08126/II**

**Steel Safety**



6 mm x 600 mm, black, max. load 22 kg (BGI 810-3), quick connector undetachably  
Order No. **01376/6**

**TV Spigot**



10 mm internal thread, 28 mm Ø  
Order No. **08128**

**Ring Screw**



M10– DIN 580  
Order No. **73700** (zincd)  
Order No. **73700/sw** (black zincd)

**Quick Trigger Clamp**



max. load 100 kg  
Order No. **01223/100 kg**

**Quick Trigger Clamp - small**



M10, max. load 20 kg  
Order No. **01223/20 kg**



MultiRigg™ Light



MultiRigg™

## ACCESSORIES X 6 dp

### Adapter



for X 4, X 6, X 8  
for mounting with Wall Mount (03034),  
incl. 2 x M10 x 20 socket head screws

Order No. **01198/w** (RAL 9010)  
Order No. **01198**

### Wall Mount



2 x M6 fixing holes (d=73 mm),  
1 x M10 fixing hole (center),  
max. load 25 kg

Order No. **03034/w** (RAL 9010)  
Order No. **03034**

### Wall Mount



bar: 269 mm, max. load 40 kg,  
incl. (M10 x 70 mm socket head screw,  
M10 hex lock nut and flat washer)

Order No. **08130/F/269/w** (RAL 9010)  
Order No. **08130/F/269**

### Wall Mount



with tilt unit, max. load 40 kg  
Order No. **08130**

### Hybrid Cable System



PowerCon-PowerCon / XLR-XLR

2,5 m Order No. **08462**  
5 m Order No. **08464**  
10 m Order No. **08466**  
15 m Order No. **08468**

### Cover



for X 6,  
padded  
Order No. **01225/X6**

### Rain Cover



for X 6,  
with zipper  
Order No. **01225/X6/outdoor**

### Flight Case



for 2 pcs. X 6 and 2 pcs. MultiRigg,  
partition walls, heavy duty, 9 mm  
birch multiplex, PVC coated black,  
6 x recessed sprung handles,  
2 x butterfly catches, 4 x 100 mm blue  
wheels (2 pcs. with brake), interior  
lined with felt  
Size (H x W x D): 68,6 x 61,5 x 65,5 cm  
Order No. **16565**



Rain Cover